

FARM EQUIPMENT



AUCTION

TRACTORS, COMBINE,
TILLAGE EQUIPMENT, GRAIN TRUCKS,
PLANTERS & MISC. ITEMS

THURS, DECEMBER 7, 11AM



Online Bidding Provided By
Equipmentfacts

Powered by TractorFacts.com, MachineryTrader.com, TruckPaper.com & MarketBook.com

PREVIEW:

THURS., NOV. 30

FROM 10-3

AT THE SCHWEINFURTH FARM

352 BETHLEHEM RD, PROSPECT, OH

AUCTION LOCATION:

RICHWOOD FAIRGROUNDS

1 GILL STREET, RICHWOOD, OH.

JOHN & PAUL SCHWEINFURTH, OWNERS



WILSON NATIONAL LLC

A REAL ESTATE & AUCTION GROUP

Mark Wilson | Brandon Wilson | James Craycraft, Auctioneers

Mark Wolfe, Sale Manager 740.361.6739 | 800.450.3440 | www.wilnat.com

AUCTION

Thursday **DECEMBER 7, 11AM**

Most equipment purchased new; hours and mileage are pre-harvest

TRACTORS



2013 Case IH Magnum 315 MFWD tractor, 1013 hours, 18 speed power shift, cab suspension, suspended front axle, 380/80R36 front duals, 480/80R50 rear duals, 5 rear SCV, 1000 PTO, Quick hitch, 1000 lb. Rear weight, AFS auto steer, luxury leather cab



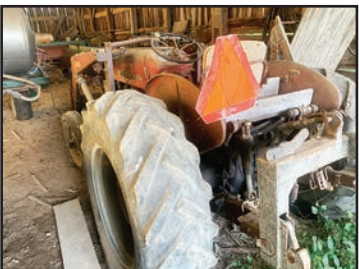
2011 Case IH Magnum 275 MFWD tractor, 1921 hours, 18 speed power shift, 380/80R34 front duals (never installed), 480/80R46 rear duals, 4 rear SCV, 1000 PTO, Quick hitch, 500lb. Rear weights, 10 front weights, Pro 700 monitor, auto steer ready



2010 Case IH Magnum 245 MFWD tractor, 938 hours, 18 speed power shift, 14.9R34 front tires, 480/80R46 rear duals, 4 rear SCV with Fasse on #4, 1000 PTO, Quick hitch, 10 front weights, auto steer ready



1992 Case IH 7140 Magnum MFWD tractor, 4626 hours, 18 speed power shift, 14.9R28 front tires, 480/80R42 rear duals BKT brand excellent, 4 rear SCV, 540/1000 PTO, Quick hitch



International 300 loader tractor with Bennett loader, has not run recently has clutch issue



10 IH front suitcase weights

HARVEST EQUIPMENT



2018 Case IH 5140 2WD axial flow combine, 962 eng. 738 sep. hours pre-harvest, lateral tilt feeder house, rock trap, chopper, folding grain tank covers, 900/60R32 drive tires, 600/65R28 steer tires, Pro 700 monitor, complete auto steer system



2014 J&M 750 corner auger grain cart, 30.5-32 bar tires, 1 3/4" PTO, hyd control flow spout, roll tarp



2018 MacDon FD135 35 ft. Draper platform, CIH faceplate, single knife drive, spare knife



2018 Unverferth AWS-36 36 ft header transport



2020 Geringhoff NorthStar Elite XL NS60 6 row corn head, header height sensors, end snout cone rolls, stalk stompers



2020 Unverferth HT 25 20 ft header transport

Kelderman 6 row corn reel

**For questions about equipment, call
Mark Wolfe 740-361-6739**

TILLAGE EQUIPMENT



2010 Krause TL-6200 31 ft. Landsman, hyd adjust disk gang, K-tine, 3 bar-spike harrow with reel



2012 Krause 8000 25 ft. Excelsior, star wheels with flat bar reel, low acres



2020 CIH 2500 5 shank in line ripper, heavy duty springs, fall points less than 300 acre use



2009 Case IH 1250 12 row 30 inch planter, single disk fertilizer openers, hyd drive fertilizer pump, ground drive, single boxes, no-till, markers, no monitor



2017 Kinze 3500 ASD 12/24 split planter, mechanical drive, no-till, heavy duty down force springs, copper head spike closing wheels, scales, KPM III monitor 4,808 total acres



IH 720 5 bottom in furrow moldboard plow, auto reset



JD 400 20 ft rotary hoe



Vermeer model 12 pull type tile plow



Case IH PTO hydraulic power unit, came off 1250 planter

TRUCKS



2007 International 8600 tandem axle truck, 560,756 miles with tag axle, 300Hp Cummins, 10 speed automatic, 11R22.5 tires, 2020 Kann 20 ft aluminum bed, roll tarp



1995 Ford L8000 tandem axle truck, 301,320 miles, Cummins diesel, 20 ft. Omaha Standard stakeless bed, 60" sides, 11R22.5 tires, Eaton-Fuller 8 speed trans diff lock, roll tarp



1989 Ford F900 tandem axle truck, shows 44,128 miles, 20 ft stakeless bed, Eaton-Fuller 15 speed trans, roll tarp

TOOLBAR/SPRAYER



BluJet 11 shank anhydrous tool bar, Yetter Magnum single disk high speed openers, manifold with hyd shut off



500 gal. Pull type sprayer, stainless tank, Century 45 ft. boom

MISCELLANEOUS EQUIPMENT



New Idea manure spreader, wooden floor, PTO drive, top beater



2012 Bush Hog 2615L "Leg-end" 15ft. Rotary cutter, 540 PTO, stump jumpers, front/rear chains, pneumatic tires on base, laminated tires on wings



J&M 250 wagon, side extensions with J&M uni-swivel auger, 10.00-20 tires, tarp



J&M 250 wagon with gear



2000 gallon elliptical poly water tank



(2) 16 ft. Wooden hay wagons



Kelly 3pt. backhoe



Pacer 2" pump with Honda engine



Monarch 2" cast pump with B&S engine




WILSON NATIONAL LLC
A REAL ESTATE & AUCTION GROUP

WILSON NATIONAL LLC
1 GILL STREET
RICHWOOD, OH
AUCTION LOCATION

TRACTORS, COMBINE, TILLAGE
EQUIPMENT, GRAIN TRUCKS,
PLANTERS & MISC. ITEMS

THURS., DEC. 7, 11 AM

AUCTION

WILSON NATIONAL LLC
A REAL ESTATE & AUCTION GROUP
8845 ST. RT. 124 HILLSBORO, OH 45133
Plain City Ohio Branch


Auction Terms & Conditions



TERMS - ON-SITE BIDDERS: Payment in full day of sale by cash, good business or personal check. No buyer premium. Must have driver's license or acceptable photo ID to register for bidder number.

**For questions about equipment, call
Mark Wolfe 740-361-6739**

TERMS - INTERNET BIDDERS: Payment by cash, good business or personal check, or wire transfer no later than 5 p.m. on Monday, December 11. (\$30.00 added to sale total for wire transfer). Go to equipmentfacts.com to register for live online bidding and additional terms and conditions.

Online Bidding Fee: Add to sale total 3% Buyer's Premium with a maximum fee of \$1000.00 per item.

GENERAL TERMS - ALL BIDDERS: All items sold "As Is". Not responsible for accidents. After item is sold, it becomes the responsibility of the Buyer. Loader available. All items to be removed within 1 week. Announcements made day of sale take precedence over this or any other printed or online material. Video or photos may be taken for security purposes or to be used for future promotional materials for Wilson National LLC. The recording of sale and sales records kept by Auctioneer and Clerk will be accepted as final.

THERE ARE JUST A FEW SMALL ITEMS THAT WILL SELL BEFORE EQUIPMENT - PLEASE BE ON TIME!