



# *Live Virtual Consignment* **ONLINE AUCTION**

**TUESDAY, DECEMBER 17 • 12 NOON**

**EASTERN STANDARD TIME**



**This will be a live auction held online. You can bid online, phone bid, or attend at offices of Wilson National LLC, 8845 SR 124, Hillsboro, OH. For online bidding go to [wilnat.com](http://wilnat.com) or [equipmentfacts.com](http://equipmentfacts.com)**



Online Bidding Provided By  
**Equipmentfacts**  
Powered by TractorHouse.com, MachineryTrader.com, TruckPaper.com & MarketBook.com



**EQUIPMENT IS NOT ON SITE - GO TO WILNAT.COM FOR CONSIGNOR LIST AND EQUIPMENT LOCATIONS**



**WILSON NATIONAL LLC**  
A REAL ESTATE & AUCTION GROUP

Mark Wilson, Brandon Wilson and James Craycraft, Auctioneers  
800.450.3440 | [www.wilnat.com](http://www.wilnat.com)

*Live Virtual  
Consignment*

# ONLINE AUCTION

EQUIPMENT IS NOT ON SITE - GO TO WILNAT.COM  
FOR CONSIGNOR LIST AND EQUIPMENT LOCATIONS

## TRACTORS.....



2013 JD 8285R MFWD, IVT, 1500 front axle, 5 SCV, 1000PTO, 480/80R50 Goodyear duals, 420/85R34 Firestone front tires, 7" color display, 22 front weights, 5168 hrs. **Doug Mitchell, 614-206-6299, London, OH.**



2013 JD 8285 MFWD, IVT, ILS, 4 SCV, 1000 PTO, 480/80R50 duals, 420/85R34 front duals, 22 front weights, 7 in color display 5650 hrs. **Doug Mitchell, 614-206-6299, London, OH.**



2012 John Deere 8360RT 30 hours on new engine installed by Deere with 2 years warranty, all PIPS completed, IVT, 3pt. PTO, 5 rear SCV outlets, 60 gpm pump, 18" tracks, good under carriage, 4150 hrs. **D&K Farms, 419-234-2810, Bluffton, OH**



2014 John Deere 8370RT 65 hours on new engine installed by local Deere dealership, IVT, 3pt., PTO, 6 rear SCV outlets, 60 gpm pump, 25" tracks, good undercarriage, 4550hrs. **D&K Farms, 419-234-2810, Bluffton, OH**



2014 JCB 3230 Extra, Fastrack 4, remotes, sisu tronic eng, 230 hp, 6520 hrs. **Jeff Martin, 937-892-0295, Bainbridge, OH**



JD 4640 Tractor, 3 pt, 3 hyd. remotes, 20.8R38 rear duals - Firestones, 14L-16.1SL fronts, LED lights, full service records, 8148 hrs., quick hitch, 16 front suitcase weights, motor has been rebuilt by John Deere, big 1,000 reduced down to a small thousand, SN: 4640H016336R. **Don Hauke, 937-840-8331, Hillsboro, OH**



New Holland T4.120 Tractor, w/bucket, cab, 1543 hrs, SN: ZFLE51267, forks sell separately. **Drausin Wulsin, 740-634-2575, Hillsboro, OH**



JD 4720 Compact tractor with cab and front loader, hydro, 4WD, 72' bucket, 17.5L-24 R4 industrial rear tires, 10x16.5 front tires, 7,119 hrs. **Eric Milholland, 937-243-7047, Marysville, OH**



JD 6230 Tractor, 673 loader w/forks & bucket, SN: w00673D011361 (front spear SN xFAB13GAC0003620/ Forks xFAP12CPC0003807), 450-85R34 Goodyear rear tires, 340-85R24 Goodyear front tires, 2 hyd. remotes, 3 pt. hitch, 540 pto, MFWD, 2175 h4rs, global loader quick disconnect, SN: L06230H614070. **Don Hauke, 937-840-8331, Hillsboro, OH**



Case Int. 685, 2255 Case IH front loader w/bucket, 540 pto, MFWD, 9.5/9-24 front tires, 16.9-30 rear tires, 4237 hrs., 2 hyd. remotes, water pump replaced, injectors replaced, 3 pt. hook-up, SN: 485219. **Don Hauke, 937-840-8331, Hillsboro, OH**



JD 6400 Tractor, w/640 loader, 7787 hours, C/H/A, MFWD, 3pt., 540 pto., 2 hyd. remotes. **Tate Cockerill, 937-403-2587, Leesburg, OH**



John Deere 3020 with JD 148 loader, gas, ROPS, 2nd owner, new front and rear tires. **Brad Fetters, 937-402-1097, Leesburg, OH**



JD 4000 Tractor, canopy, gas, 2wd, 540 pto, runs well, clean, tight, good rubber, 2800 hrs. **Andy Beiser, 513-200-8200, Somerville, OH**



McCormick Farmall H Tractor, TR-135 rear tires, new, 5.50-16 SL new front tires, 540 pto, SN: FBH 345801X. **Kenny Stevens, 937-402-6398, Leesburg, OH**



1975 Case David Brown Model 995 Tractor, Case 65 front end loader, MFWD, Firestone 11.2-24 fronts, Firestone 16.9-30 rears, rear duals included. **Brandon Wilson, 937-763-1993, Hillsboro, OH**



JD 1250 Tractor, JD 100 loader, 3 pt, 2 remotes, 540 pto, has power steering & hydraulic issue. **Brandon Wilson, 937-763-1993, Hillsboro, OH**



JD 4020 Loader 48. **Rick Kisling, 937-763-6830, Hillsboro, OH**

For online bidding  
go to [wilnat.com](http://wilnat.com) or  
[equipmentfacts.com](http://equipmentfacts.com)

## COMBINES-DRAPERS-CORNHEADS-TRANSPORT.....



**1998 JD 9510 Combine**, 4949/3146 hours, Maurer bin extensions, chaff spreader, rebuilt variable speed drive last season, yield & moisture monitor, 30.5-32 front tires, 14.9-24 rear tires SN: H09510X677720. **Berry Farms LLC, 740-243-5040, Lancaster, OH**



**JD 643 Cornhead**, High tin, has been welded. **Berry Farms LLC, 740-243-5040, Lancaster, OH**



**2021 EZ-Trail 37' 880 head trailer**, barely used & stored indoors. **Michael Hosford, 937-367-4258, New Carlisle, OH**



**2001 JD 925F Platform**, full finger, new sickle bar last season, sells w/30' Unverferth header cart. **Berry Farms LLC, 740-243-5040, Lancaster, OH**



**2016 JD 625F Platform**, auger, hydraulic, 25', Cray Air reel, 30' Unverferth HT 12 header cart included. SN: 1H00625FVG0785185. **Andy Beiser, 513-200-8200, Somerville, OH**



**30' Unverferth HT30 Head Cart**, **Berry Farms LLC, 740-243-5040, Lancaster, OH**



**2010 Drago**, 8 row cornhead w/Unverferth cart. **Accacia Farms, Brian, 419-706-5049, Norwalk, OH**



**Kelderman 6 Row Corn Reel**, **David Stickney, Hillcrest Farms, 937-926-0506, South Vienna, OH**

## SEMIS - TRUCKS - TRAILERS .....



**2015 Mack CXU 613 Semi Tractor**, day cab, MP7, 395 hp, 10 spd Eaton, air ride, AC, air seat, pwr. windows, rebuilt Weller trans, new wiring harness in 2021. **Samuel Detweiler, 567-305-1821, Kenton, OH**



**2012 Peterbilt 384 Semi Tractor**, day cab, ISX Cummins, air ride, wet kit, Eaton auto., 364,513 miles. **Rhoades Farm, 740-225-0654, Radnor, OH**



**2008 Int. Semi**, w/ISX 500 hp eng., Eaton auto shift, 10 spd, wet line, lock up 5th wheel, good rubber, 1,043,000 miles. **Jeff Martin, 937-892-0295, Bainbridge, OH**



**1994 Volvo GM**, HS205 steer tires, 11R22.5 rears, air ride, 9 spd Eaton, 745,746 mi, 60's series Detroit eng. 12.7, no AC, sliding 5th wheel, newer air dryer, cross members have been rebuilt, brass were put on when purchased. **Edward Beeler, 513-616-5613, Hamilton, OH**



**1991 Kenworth T600 Semi Tractor**, w/sleeper, 13 spd, Cummins 444. **Perry Acres, 740-404-0443, Ashley, OH**



**1984 AM General Semi Tractor**, day cab, Allison 5 spd auto, Cummins, 101,936 miles. **Rhoades Farm, 740-225-0654, Radnor, OH**



**2001 Sterling Day Cab Semi**, 593,000 miles, C12 CAT engine, 10 spd. trans., 22.5 tires, **Bean Brothers, 937-302-6543, Sabina, OH**



**1981 Ford L9000 Grain Truck**, 205,983 mi, 9 spd, bed works as should, truck runs & drives, 11R22.5 tires, tandem axle, rear air cheater, 20'x64' tall Knapheide bed, cargo doors, wood floor w/poly liner flooring, holds about 650 bu, last oil change was 2,000 miles on it, Cummins motor. **Edward Beeler, 513-616-5613, Hamilton, OH**



**1973 Ford 880 Lime Truck**, w/new leader bed. **Perry Acres, 740-404-0443, Ashley, OH**



**1967 Ford 600 Flat Bed**, **Perry Acres, 740-404-0443, Ashley, OH**



**1971 Ford F100 Sport Custom**, 2 dr., long bed, 3.9L/240 cu in Inline-6 eng, 1,000 miles on rebuilt eng, lots of care, stored inside during winter, lots of orig. parts, 3 spd trans (entirely rebuilt in 2018), electric ignition/carburetor, Duralast bed, new tires, VIN: F10ANK00558. **Doug Hardin, 937-393-9259, Hillsboro, OH**



**1974 Ford 750 Gas Fire Truck**, 750 gal, pump works. **BFD Farms, Mark, 740-361-3315, LaRue, OH**

**This will be a live auction held online. You can bid online, phone bid, or attend at offices of: Wilson National LLC, 8845 SR 124, Hillsboro, OH**

## SEMI'S - TRUCKS TRAILERS.....



**2004 Chevy Trailblazer LT**, leather, 4WD, auto, inline 6, pwr. windows/locks. **Perry Acres, 740-404-0443, Ashley, OH**



**2007 Chevy Impala**, auto, power windows/locks. **Perry Acres, 740-404-0443, Ashley, OH**



**24' Gooseneck Trailer**, w/ramps, Roadrunner brand. **Rick Kisling, 937-763-6830, Hillsboro, OH**

## MOTORCYCLE.....



**2001 Harley Davidson FLHT Electra Glide**, Cruiser/touring, 5 spd., 47,500 mi, used with lots of care & always stored inside, mostly hwy miles, fuel injection, air horn, dbl. barrel side by side exhaust pipes, orig. leather driver seat, orig. users manual. LED underglow, VIN: 1HD1DDV101Y629325. **Doug Hardin, 937-393-9259, Hillsboro, OH**

**This will be a live auction held online. You can bid online, phone bid, or attend at offices of: Wilson National LLC 8845 SR 124 Hillsboro, OH**

## PLANTING.....



**2014 JD DB60 47R15 CCS Planter**, row command, Seedstar XP, variable rate, active pneumatic down force, spike closing wheels, markers, approx. 25,000 ac. **Doug Mitchell, 614-206-6299, London, OH**



**2015 Kinze 3600**, 16 row corn planter, starter fertilizer piston pump 2x2, row cleaners, elec. row disconnect & central fill, new blades last spring. **Dave DeLong, 740-412-2816, Laurelville, OH**



**2013 Kinze 3660 12/24**, RowFlow & AirForce, RowFlow include 1 hyd. drive for population control, 24 row clutches (24 sections), AirForce includes 1 hyd. compressor, 7 weight pins, auto. downforce adj., vSet classic vacuum meters, 12 corn crop kits, 24 soybean crop kits, 1.6 bu. boxes w/box ext, row mounted coulters (new 2022), heavy double disk openers (GBGI) & seed tube guards (new 2022). All drive chain (new 2022), row unit chains (new 2023), Keeton seed firmer, 2 - 300 gal. liquid fertilizer tanks, 1 - John Blue piston pump, single disk fertilizer coulter w/knife, dual martin crusher closing wheels, water rinse tank for hands, 5 remotes plus case drain required to run the planter. **Michael Hosford, 937-367-4258, New Carlisle, OH**



**JD 8300 Drill**, **Rick Kisling, 937-763-6830, Hillsboro, OH**



**JD 1910**, 270 bu. two compartment air cart w/36' JD 1890 drill on 7.5" spacing, Haukaas side arm markers, 31x13.5 hi float tires, seed monitor, 42,416 acres. **BFD Farms, Mark, 740-361-3315, LaRue, OH**



**1997 Great Plains 2140 NT**, 24' no-till drill, 7.5" spacing, markers, monitor, updated parts. **Tom Smith, 419-348-6802, Fostoria, OH**

## SPRAYERS.....



**JD R4045 Self-Propelled Sprayer**, 120' booms, 1200 gal. stainless tank, BKT VF380/105R50, inductor, leather, 2286 hrs. **BFD Farms, Mark, 740-361-3315, LaRue, OH**



**2005 Apache AS850 Self-Propelled Sprayer**, 14.9-38/13-38 front tires, 380/90R46 Firestone rear tires, 850 gal. poly tank, has been winterized, acuboom, 5 section shut off, raven, Reman. JD straight block motor only has 20 hrs on the motor, warranty is gone, 2740 hrs., SN: 905 2700. **Kenny Stevens, 937-402-6398, Leesburg, OH**

**For online bidding go to wilnat.com or equipmentfacts.com**

## SPRAYERS.....



**1980 Ford 800 Spray Truck**, right side boom needs rebuilt, 60', ag leader insight computer, 2 section, foam worked last time used, hyd. pump & ground driven, 750/45R22.5 rear floater tires, 550/45-22.5 floater steer tires, 477 gas marine eng, load & mix w/hyd. pump, ground drive John Blue pump, 1500 gal. stainless steel tank, 25 gal. clean water tank, 5 2-spd. **Edward Beeler, 513-616-5613, Hamilton, OH**

## TILLAGE.....



**2019 Salford 1200**, 28' vertical till, tandems on base & wings, weight pkg, rear coil tine & basket, rear hitch 1 owner, sharp. **Terry Corney, 419-569-0131, Galion, OH**



**Case International 6500**, Conser-Till chisel plow, 9 shank, new blades & shanks, hyd. raise & lower disk gangs, 11L-15SL tires, JAG, SN: 0013914. **Don Hauke, 937-840-8331, Hillsboro, OH**



**JD 995 Reversible Plow**, 5 shank 18", 3 pt, 6.70-15 SL tires, trip bar for rocks, SN: P00995/001033. **Darren Brubaker, 937-533-0090, West Alexandria, OH**



**DMI Ecolo-Champ**, 11 shank, 5 parabolic rear, spring shovel leveling on back. **Dave DeLong, 740-412-2816, Laurelville, OH**

## TILLAGE



44' JD 2200 Field Cultivator, Tri-fold, walking tandem axles, front dolly wheels, 3 bar coil tine harrow, SN: N02200X000692. **Gale Allen, Allen Farms, 937-760-5481, Lynchburg, OH**



20' JD 235 DuraCushion Disk, field ready, 11L-14 SL, like new blades, 9" spacing, SN: 019925A. **Darren Brubaker, 937-533-0090, West Alexandria, OH**



2014 Blu Jet, 17 shank pull type anhydrous applicator, Raven cooler w/440 controller, 385/85R34 bar tires on base, dbl. disk coupler sealers, excellent. **Accacia Farms, Brian, 419-706-5049, Norwalk, OH**



30' McFarlane 4030 Reel Disk, 19" blade, rolling basket, 3 bar harrow, tandem axle, SN: 12513. **Darby Maple Farms LLC, Mike Thrush, 614-203-0838, Milford Center, OH**



DMI Chisel Plow, 9 shank ripper, 12.5L-15 SL tires. **David Stickney, Hillcrest Farms, 937-926-0506, South Vienna, OH**



15' Horsch Anderson High Speed Disk, 3 pt mount, fast hitch goes with it, weight kit, hitch for rolling baskets, SN: 15010015. **Edward Beeler, 513-616-5613, Hamilton, OH**



2016 30' Great Plains Turbo Max w/ rolling basket and rear hitch. **Nicholas Daily, 513-310-1338, Sardinia, OH**



Krause 25' Field Cultivator, 9.5L-15SL tires, SN: 1867. **David Stickney, Hillcrest Farms, 937-926-0506, South Vienna, OH**



2017 Horsch RT25 25ft. Hi speed disk, wing gauge wheels with spring tine roll-flex finisher. **Bahan Farms, Bradley 937-707-5635, Mt. Victory, OH**



45' Unverferth 1225 Double Rolling Harrow, Tri folding, tandem axles. **Gale Allen, Allen Farms, 937-760-5481, Lynchburg, OH**



Landoll 7431 VT 33', new blades & bearings last fall. **Dave DeLong, 740-412-2816, Laurelville, OH**



Brillion 15' Cultimulcher, 9.5L-15. **David Stickney, Hillcrest Farms, 937-926-0506, South Vienna, OH**

## GRAIN HANDLING



10x62 Mayrath Swing Away Auger, 540 pto, hyd. raise & lower, 235/70R15 tires, SN: 422719. **Edward Beeler, 513-616-5613, Hamilton, OH**



10x62 Mayrath Straight Auger, ST22575R15 tires, SN: 905534. **Edward Beeler, 513-616-5613, Hamilton, OH**



2011 Westfield 10x61 Swing Away Auger, 107/102L new tires, hyd. raise & lower, 540 pto, SN: 216584. **Don Hauke, 937-840-8331, Hillsboro, OH**



E-Z Flow 400 Bu Gravity Bed, w/ extensions, J&M 12 ton running gear, center divider - each side holds 200 bu clear to the top, 10.00-20 tires. **David Stickney, Hillcrest Farms, 937-926-0506, South Vienna, OH**



Hutchinson 32', 10" load out auger, electric drive with motor. **Perry Acres, 740-404-0443, Ashley, OH**



2012 J&M 1326 Grain Storm corner auger grain cart, tarp, 36" tracks, scales and iFarm unload, new bottom auger and gear box 2 years ago. **Bahan Farms, Bradley 937-707-5635, Mt. Victory, OH**



2013 Harvest International H1372, swing away auger, 13"x72', 540 pto, power hopper. **Rhoades Farm, 740-225-0654, Radnor, OH**



Parker S1000 Gravity Bed Wagon, 400 bu, 16.5L-16.1, brakes, two unload doors, pivoting bed. **Darren Brubaker, 937-533-0090, West Alexandria, OH**



**WILSON NATIONAL LLC**  
A REAL ESTATE & AUCTION GROUP

**CONSTRUCTION ..... GPS - DISPLAYS RECEIVERS .....**



1994 L170 New Holland Skid Steer, manure bucket, steel tracks for tires has spacers, extra rim, bucket round bale spear, homemade forks, enclosed cab, hand foot controls, quick tach, diesel, 10-16.5 tires, 3,624 hrs., VIN: N8M487402. **Edward Beeler, 513-616-5613, Hamilton, OH**



JD 750 G Dozer, 14,000 hrs., logging package with winch, 10 hrs. on rebuilt motor, works great, like new. **Leroy Yutzy, 937-515-9734, Winchester, OH**



2005 JD 160 C LC Excavator, hyd. end grab quick tach bucket, 60" ditch bucket, 36" tooth bucket, 34" tracks, 50% undercarriage. **Adkins Farm, Ryan 419-560-5583, Margengo, OH**



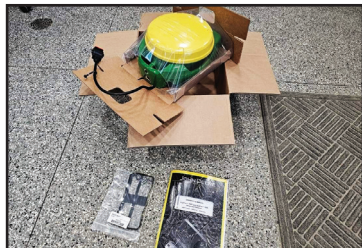
JD 333E Skid Steer, 5,400 hrs., power detach like new tracks, ROPS, SN: 1T0333EKEFE276893. **Leroy Yutzy, 937-515-9734, Winchester, OH**



2001 Multiquip Whiteman Series Model HHN31VTCSL5 8' Ride on Trowel Machine, Twin Pitch Controls, 330 hrs., Briggs & Stratton Vanguard DM950G Liquid Colled Gas Engine, Well serviced, works well. **John Partin, 513-313-6834, Hamilton, OH**



2024 John Deere G5 Plus Display, new in the box, subscription based autotractor, section control and rowsense until October 29, 2025 integrated itec pro, pivot pro/circle track and igrade, 1 yr factory warranty, **C&A Farms, 419-234-8917, Bluffton, OH**



2024 John Deere Starfire 7000 GPS receiver with SF1, new in the box, factory SF-RTK ready with factory 1 year warranty, **C&A Farms, 419-234-8917, Bluffton, OH**



2021 CNH 372 unloader to WAAS, RTX and RTK, has active range point RTX subscription until March 2028. **C&A Farms, 419-234-8917, Bluffton, OH**



2021 Trimble Nave controller 3 on CNH software, **C&A Farms, 419-234-8917, Bluffton, OH**



2021 CNH Pro700/Intelliview 4 with software for autoguidance, telematics and VT display, display is currently on NH software can be converted by dealer to CIH. **C&A Farms, 419-234-8917, Bluffton, OH**

**HAY - GRINDER - MIXERS - FEEDERS .....**



Jay-Lor 4350 Tub Grinder, side chute, scales work, 540 pto, new knives, SN: 018134. **Steve Chrisman, 740-253-1776, Bainbridge, OH**



5600 Jay-Lor TMR Mixer, tandem axles, digi-star scale, hyd. shoot, front left hyd. unload, 12.5L-15L tires, 540 pto, SN: 022009. **Esquire Cattle Co., David Schaffner, 330-204-4351, Dover, OH**



JD 559 Round Baler Silage Special **Rick Kisling, 937-763-6830, Hillsboro, OH**



Gehl MX 125 Feed Grinder Mixer, scales, 540 pto, new unload auger put in, SN: 12550. **Edward Beeler, 513-616-5613, Hamilton, OH**



New Holland 357 Grinder Mixer, 3 ton, long auger. SN: 411887 **Steve Chrisman, 740-253-1776, Bainbridge, OH**



JD 750 Feed Grinder, w/hay processor, good working cond., scales but need repaired, extra screens **Sweeney Farms, Tom 740-621-1465, Somerset, OH**



2024 Frontier WR 3208 Wheel Rake, **Joseph Shultz, 304-580-9119, Delaware, OH**



7' Marting Steer Stuffer, **David Stickney, Hillcrest Farms, 937-926-0506, South Vienna, OH**



14' Marting Steer Stuffer, **David Stickney, Hillcrest Farms, 937-926-0506, South Vienna, OH**



(7) Round Bale Feeders, All have 1 extra bar for calves. **David Stickney, Hillcrest Farms, 937-926-0506, South Vienna, OH**



1-Ton Feed Bin, **Bean Brothers, 937-302-6543, Sabina, OH**



2-Ton Feed Bin, **Bean Brothers, 937-302-6543, Sabina, OH**

# SPREADERS - MOWERS - MISCELLANEOUS



Wilmar 800 Fertilizer Spreader, 6 ton. **Steve Chrisman, 740-253-1776, Bainbridge, OH**



Wilmar Super 600 Fertilizer Spreader, 5 ton, narrow track, new fans on back, new roll tarp. SN: AGCHS600ANV001072. **Steve Chrisman, 740-253-1776, Bainbridge, OH**



Wilmar Super 600 Fertilizer Spreader, 5 ton. **Steve Chrisman, 740-253-1776, Bainbridge, OH**



Vermeer TS44 Tree Spade, bumper hitch, Kohler eng. w/elec. start. **Stilwell Farms, 740-808-0971, Baltimore, OH**



2019 Elmers Mfg. Wolverine Extreme Dirt Blower, 5' flat bottom, 1000 pto, updated paddles, liner & bearings, sells with GPS controllers. **Rhoades Farm, 740-225-0654, Radnor, OH**



3,300 Betterbuilt Honey Wagon, pump works, tank has a couple small holes, 1000 pto, air plane tires **Berry Farms LLC, 740-243-5040, Lancaster, OH**



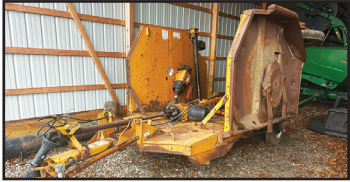
Seppi M S9 Coupe 225 Flail Mower, w.single XSC x fast outrigger, 8' w/2' head, external cooling unit. SN: M511580013. **Carraher Farms, Doug 937-205-1292, Sardinia, OH**



Seppi M S9 Coupe 225 Flail Mower, w.single XSC x fast outrigger, 8' w/2' head, external cooling unit. SN:1511580019. **Carraher Farms, Doug 937-205-1292, Sardinia, OH**



Bush Hog 1815 Batwing Mower, 15'. **Drausin Wulsin, 740-634-2575, Hillsboro, OH**



Woods 3180 15' Batwing Mower, 540 pto. **Stilwell Farms, 740-808-0971, Baltimore, OH**



Batco PS2400 Drive Over Conveyor, like new. **Stilwell Farms, 740-808-0971, Baltimore, OH**



1988 Honda 300 fourtrax ATV ran fine but has bent axle **Berry Farms LLC, 740-243-5040, Lancaster, OH**



1987 Honda 250 fourtrax ATV for parts **Berry Farms LLC, 740-243-5040, Lancaster, OH**



Gordon Smith 100cf Air Compressor, Ford eng, 100' hose & reel. **Stilwell Farms, 740-808-0971, Baltimore, OH**



Bale Spear Forks for Front Loader. **Drausin Wulsin, 740-634-2575, Hillsboro, OH**



28' Pasture Harrow, **Steve Chrisman, 740-253-1776, Bainbridge, OH**



Kools grain/forage blower, **Berry Farms LLC, 740-243-5040, Lancaster, OH**



Precision Planting 20/20 Seed-Sense Gen II, w/all cables & mounting equip. **Michael Hosford, 937-367-4258, New Carlisle, OH**



AgraTronix MT-16 grain moisture tester **Berry Farms LLC, 740-243-5040, Lancaster, OH**



Kilbros Running Gear, **Bean Brothers, 937-302-6543, Sabina, OH**



Unverferth Conveyor, **Horizon Farms, Ron, 937-537-0452, Marysville, OH**



Firestone Duals, 480/80R42 w/10 bolt rims. **Bean Brothers, 937-302-6543, Sabina, OH**



(16) JD Single Disk Fertilizer Openers. **Accacia Farms, Brian, 419-706-5049, Norwalk, OH**



(16) Martin Unit Mounted Row Cleaners. **Accacia Farms, Brian, 419-706-5049, Norwalk, OH**



(21) CIH Front Suitcase Weights. **Accacia Farms, Brian, 419-706-5049, Norwalk, OH**



**WILSON NATIONAL LLC**  
A REAL ESTATE & AUCTION GROUP

This will be a live auction held online.  
You can bid online, phone bid, or attend  
at offices of: Wilson National LLC  
8845 SR 124, Hillsboro, OH | 800.450.3440

*Live Virtual  
Consignment*

# ONLINE AUCTION

## EQUIPMENT IS NOT ON SITE

### ADDITIONAL CONSIGNMENTS ADDED



2014 John Deere 8370R, IVT, ILS, premium leather cab, premium lighting, 5 rear SCV outlets, 60 gpm pump, 3pt hitch, 4600 processor, Firestone tires, rear weights 3,500 hours. **D&K Farms, 419-234-2810, Bluffton, OH**



30' 2013 Rollins Gooseneck Trailer, electric over hydraulic brakes, 8' deck over neck, 102" wide, tandem 10,000 lb. axle, 12,000 lb. winch, ramps, good tires & brakes. **Ronnie Anderson, 937-217-0938, Peebles, OH**



7' Skid Steer Dozer Blade, universal rotating, switch moves into cab, **Jeff Roem, 937-402-0977, Hillsboro, OH**



Priefert Tilt Table, **Jeff Roem, 937-402-0977, Hillsboro, OH**



753 Bobcat Skid Steer, 10-16.5 tires, diesel, 66" bucket, auxiliary hydraulics, 3,090 hours, **Kurt Hamilton, 937-708-0973, Leesburg, OH**

## Ohio's Premier Agricultural Asset Marketer



# WILSON NATIONAL LLC

## A REAL ESTATE & AUCTION GROUP





# WILSON NATIONAL LLC

A REAL ESTATE & AUCTION GROUP

8845 St. Rt. 124 Hillsboro, OH 45133

Plain City Ohio Branch

*Live Virtual  
Consignment*  
**ONLINE  
AUCTION  
TUESDAY  
DEC. 17  
12 NOON**

## Auction Terms & Conditions

### ON-SITE BIDDERS:

- No Buyers Premium -Payment: Payment in full day of sale
- cash
- check
- credit card (3.5% Fee)
- Must have driver's license or acceptable photo ID to register for bidder number.

### INTERNET BIDDERS:

- 3% Buyer's Premium (\$2,500 cap per item)
- Payment: Pay in full no later than 5 P.M. on Monday, Dec. 23, 2024
  - Wire Transfer (\$20.00 fee)
  - ACH (May take up to 3 days to process before you receive paid invoice and are able to pick up your item)
  - Credit Card (4% fee)
- Go to [www.equipmentfacts.com](http://www.equipmentfacts.com) to register for live online bidding and additional terms and conditions.

**GENERAL TERMS - ALL BIDDERS:** No items to be removed from premises until paid in full. Wilson National LLC and their consignors are not responsible for any typos in bidding that bidders make online, or technological difficulties that buyers have. Wilson National LLC has the right to bid on behalf of phone bidders, absentee bidders or the sellers. All sales final. All items sold "as is, where is". If a purchaser of an auction item does not take physical possession of the item by removing it from the Sale Agent's premises within 15 days of notification of a successful bid, the purchaser shall be deemed to have abandoned the item and forfeited the purchase price paid. However, if the purchaser communicates with the Sale Agent and provides notice of any delay in pickup due to extenuating circumstances, the forfeiture shall be waived, provided the purchaser maintains reasonable and ongoing communication with the Sale Agent regarding their intent to retrieve the item. Additional storage fees may apply after the initial 15-day period, as determined by the Sale Agent. If an item remains unclaimed by any valid bidder, said item will be disposed of as valueless or at the discretion of the Owner, re-listed for auction. Not responsible for accidents. After item is sold, it becomes the responsibility of the Buyer. All terms and statements made by the auctioneer over the live stream on Auction day will take precedence over all other material. Video or photos may be taken for security purposes or to be used for future promotional materials for Wilson National LLC. The recording of sale and sales records kept by Auctioneer and Clerk will be accepted as final. Auction firm makes no guarantee as to condition of equipment. It is bidder's responsibility to inspect item to their own satisfaction before bid is made. Wilson National is not responsible for statements made by seller.



### PHONE BIDDERS:

- 2% Buyer's Premium (\$1,500 cap per item)
- Payment: Pay in full no later than 5 P.M. on Monday, Dec. 20, 2024
- Wire Transfer (\$20.00 fee)
- ACH (May take up to 3 days to process before you receive paid invoice and are able to pick up your item)
- Credit Card (4% fee)- Go to [www.equipmentfacts.com](http://www.equipmentfacts.com) to register for live online bidding and additional terms and conditions.

### ITEM PICKUP:

- Items must be picked up by Friday, Jan. 10, 2025.
- Buyers will arrange time for pickup with the seller of that item.
- Buyers must show a paid invoice to seller when picking up item.
- Buyer is responsible for all shipping and handling costs.